

# COLORED<sup>®</sup> PENCIL magazine

[www.coloredpencilworkshop.com](http://www.coloredpencilworkshop.com)

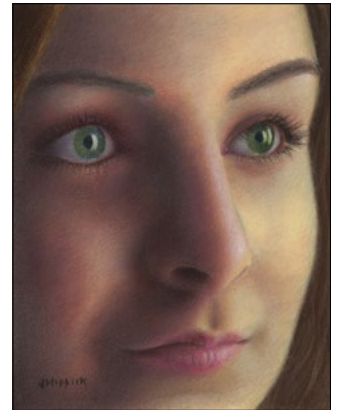


## Female Portrait

ISSUE: JANUARY 2022

Instructor: John Middick

[www.sharpenedartist.com](http://www.sharpenedartist.com)



✓ MATERIAL LIST
Pastelmat by Clairefontaine, 9x12" (24X30 cm) white sheet with composition size of 5.5x7"
CARAN D'ACHE LUMINANCE
Herculanum Red 068
Violet Grey 093
Light Flesh 10% 542
Anthraquinone Carmine 580
Pink White 581
Dark Flesh 40% 745
Dark Flesh 748
FABER-CASTELL POLYCHROMOS
Ivory 103
Light Ultramarine 140
Dark Indigo 157
Caput Mortuum 169
Chromium Green Opaque 174
Caput Mortuum Violet 263
Burnt Sienna 283
DERWENT LIGHTFAST PENCILS
Wild Lavender 031
OPTIONAL BLENDING TOOLS:
Sofft tools knife (by PanPastel)
Winsor & Newton Sceptre Gold II Brush, Flat 10mm

Follow the workshop step-by-step in the January 2022 issue of COLORED PENCIL Magazine  
Purchase at [www.coloredpencilmag.com](http://www.coloredpencilmag.com)