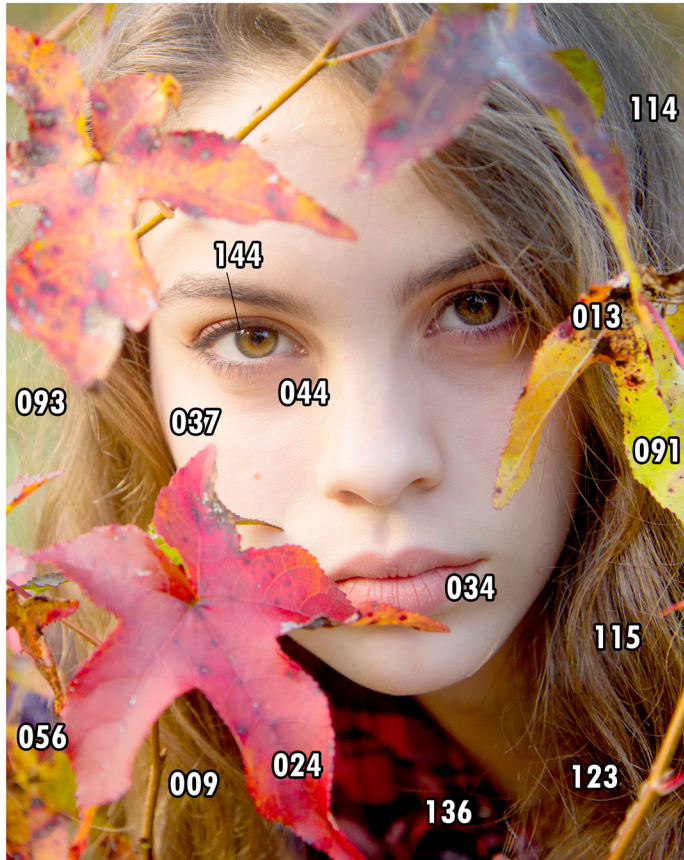


# GRIZAYE DRAWING KIT COLOR GUIDE & TIPS

## Fall Portrait



## COLOR GUIDE

*These colors are just suggestions. Mix your colors to get the closest match. Compare swatches to your favorite colored pencil brand!*

Grizaye Master Color | PC = Prismacolor Premier | FC = Faber-Castell Polychromos

<b>009</b>	Jasmine PC1012 FC184	<b>013</b>	Sunburst Yellow PC917 FC111
<b>024</b>	Crimson Red PC924 FC226	<b>034</b>	Pink Rose PC1018 FC119
<b>037</b>	Light Peach PC927 FC132	<b>044</b>	Clay Rose PC1017 FC252
<b>056</b>	Parma Violet PC1008 FC136	<b>091</b>	Yellow Chartreuse PC1004 FC205
<b>093</b>	Lime Peel PC1005 FC170	<b>114</b>	Light Umber PC941 FC178
<b>115</b>	Chocolate PC1082 FC283	<b>123</b>	Dark Brown PC946 FC177
<b>136</b>	Black PC935 FC199	<b>144</b>	White PC938 FC101

## GRIZAYE TIPS

First, identify and apply your darkest colors. Defining the details now helps ensure they will not get lost and will establish the overall tone of the piece. Next, lay down your mid-tones, leaving your brightest areas the color of the paper. Trust what you see. Following the abstract patterns will translate to realistic leaves and hair. Now, go in with your lightest colors, smoothing transitions as you layer. Using a colorless blender pencil can also help fill in the tooth of the paper. A white pencil will help make the highlights pop. Last, go over all your areas again, darkening and deepening tones. This will blend all your layers and can make all the difference in the end results. Good luck, and have fun!

Visit our website for additional kits, downloads, videos, and more!

[www.grizaye.com](http://www.grizaye.com) • Platte Productions, LLC